



**Scouts**

**Blacktoft Beacon**

# **Annual Report**

**and Accounts 2019-20**



# Welcome from the Chair

The world has changed somewhat since our last Blacktoft Beacon District Annual General Meeting. As you would expect Scouting in the UK and in the District has, and continues to, adapt to the new environment that we find ourselves in.

In the months before the Coronavirus pandemic, Scouting in Blacktoft Beacon District has moved forward with a good strategy for development and delivering events, challenges and activities that are providing genuine 'Skills for Life'.

As with so many elements of normal life, parts of Scouting have had to change or be put on hold for a time. The District Leadership teams are working hard to find ways to create ongoing positive Scouting experiences, whilst maintaining the health and safety of members and families.

We are privileged in Blacktoft Beacon District to have a Leadership and Executive team that have the dedication and skills to steer the organisation through this challenging period and navigate through the ongoing and changing landscape as the pandemic impact and 'un-lockdown' unfolds.

My thanks go out to all of our Leaders, helpers, members and families for your patience, commitment and understanding. Together we will move past this and forward, continuing to develop and enjoy Scouting in our district for years to come.

**Scott Millard**

District Chairman

Blacktoft Beacon Scouts

# District Growth

## 2020 Census Figures

Name	Beavers	Cubs	Scouts	Explorers	Young People	Network	Total Adults	Total
Blacktoft Beacon	-	-	-	83	83	37	161	244
Anlaby (St Mark's)	10	11	9	-	30	-	14	44
Cottingham	30	28	30	-	88	-	11	99
Elloughton-Cum-Brough	24	35	24	-	83	-	22	105
Ferriby and Swanland	32	23	11	-	66	-	13	79
Gilberdyke (St Stephen's)	24	24	24	-	72	-	20	92
1st Goole	12	25	13	-	50	-	16	66
Hessle	22	47	49	-	118	-	23	141
1st Hook	14	16	3	-	33	-	7	40
1st Howden - St Peter's	19	29	21	-	69	-	18	87
2nd Kirkella (St Andrews)	13	60	21	-	94	-	24	118
1st Snaith	29	36	29	-	94	-	22	116
South Cave	14	22	12	-	48	-	13	61
Willerby	29	22	18	-	69	-	14	83
<b>Totals</b>	<b>272</b>	<b>378</b>	<b>264</b>	<b>83</b>	<b>997</b>	<b>37</b>	<b>378</b>	<b>1375</b>
Change from 2019	-10	-1	+9	-5	-7	+9	+32	+25
% change from 2019	-4%	-0%	+4%	-6%	-1%	+32%	+9%	+2%
Change from 2015	+3	-4	+11	+15	+25	+35	+191	+216
% change from 2015	+1%	-1%	+4%	+22%	+3%	+1750%	+102%	+19%

## 2020 Trends

It's fantastic to see another year of growth for 3 Groups within the District!

All our Groups have Beavers, Cubs and Scouts, with some even having multiple Colonies, Packs and Troops.

Our Explorer, Network and Adult volunteer numbers continue to be high too.

Over the past 5 years, as a whole District we have grown by 19% which is brilliant!

Last year we saw a drop in our Scout numbers, so it is great to see that they have increased by 4% this year.

Our Network numbers have increased by an amazing 32% and that is testament to the programme they have been running for the 18-25 year olds in our District.

# Roll of Honour



## Bar to the Award for Merit

**Richard Moverley**

ESL

Cottingham

**Freddy Preston**

District Appointments Chair

Blacktoft Beacon

**Paul Wharram**

SL

Elloughton-cum-Brough

**Shaun Wilson**

DESC

Blacktoft Beacon

We would also like to congratulate all those who have received their Wood Beads and Length of Service Awards this year too.



## Chief Scout's Commendation for Good Service

**Jill Deacon**

BSL

Gilberdyke

**Debbie Derry**

BSL & ESL

Goole

**Stuart Fox**

ASL

Elloughton-cum-Brough

**Peter Thane**

ASL

Elloughton-cum-Brough

**Rachael Macadam**

DDC

Blacktoft Beacon

# A Year in Blacktoft Beacon...



I've been to Gilwell 24 twice and it's one of the highlights of the year for me I'm always looking forward to the next year as we are leaving the site. Obviously the 24 hour challenge is a big part but it's always an amazing time and a great opportunity to spend a weekend doing all sorts of interesting activities and spend time with my friends (sometimes making some new ones). Last year we all went on multiple rides and did loads of scouting activities like archery. There's always something to do varying from the disco all night to snorkelling which is why it's so interesting.



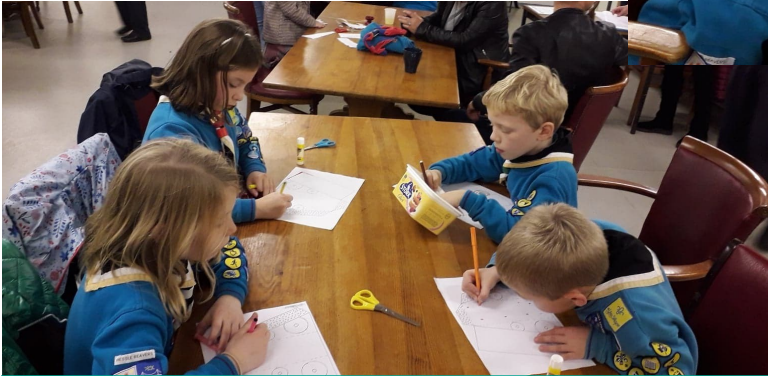
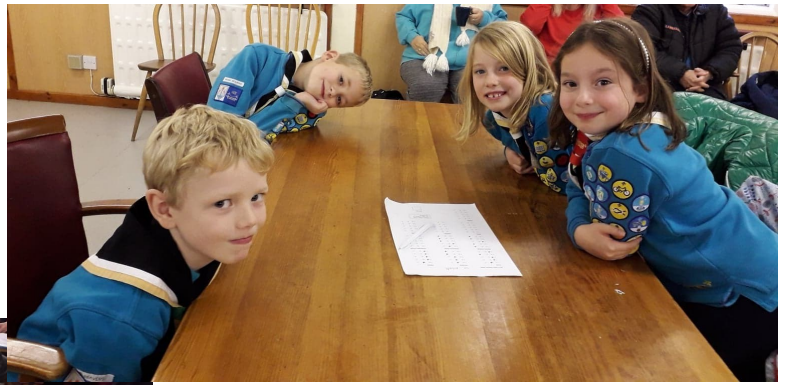
My trip to the World Scout Jamboree in America last summer was an experience I will never forget. I gained more confidence, team work skills and patience, and I learned just how important it is to look after our planet. I enjoyed the whole 3 weeks away but I especially enjoyed; the opening and closing ceremonies, scuba diving, visiting New York, The White House in Washington, Niagara Falls and going to the top of the CN Tower in Toronto, Canada. It made me proud to be a part of Scouting and I am grateful to have had the opportunity.



In July 2019 a group of explorers and Network went on a trip of a life to Canada, to white water raft down the Babine river. Here is a picture of the group meeting Canadian Scouts at Gator Lake and another picture of a wild bear and her cubs.



I signed up for the Austria trip on only my second week in the Troop but I didn't regret it. It was my first trip abroad without my parents. I was worried about such a long journey by coach but that turned out to be funny and entertaining, absolutely fine. In Austria the surroundings were very green and we could hear the cow bells, and see the mountain peaks from our beds. All the activities were really fun - canyoning, white water rafting and tobogganing all brilliant.



Hessle Beavers were delighted to represent the District at the County Beaver Quiz again this year. The Team placed 4th overall and it was lovely to hear compliments from other Leaders and parents about how well they worked together as a team.



BBITS JOTI/JOTA day was fun filled day where participants had the chance to learn about loads of technical things and talk to other Scouts around the world. The day saw the young people learning about the inside of a computer, programming, making buzz bots and learning how to use a long range radios.





It was an accomplishment to finish as a team. My last fells was fun. It was also a good idea for us all to sleep in a 3 man tent!



Back in November as a district a group of explorers went to Alton towers for their Scarefest event which was AMAZING. We embarked upon this adventure at the bright and early time of 8 O'clock and then travelled to the park and on the journey as a collective group we too the decision to stay until the closure of the park in the evening so we would be able to experience some of the rides at night which made them all the more exciting. We went around the park as a group and went on rides such as the famous 'smiler' and went on their feature ride at that time, the wicker man, and all of this even despite the rain resulted in an amazing fun filled day for everyone.



The Scout Speak Up Course was a great opportunity to mix with other people in Scouting from around the County. It helped me to be more confident when it comes to speaking to people I don't know.



On the 17th November many of the Humber Lumberjacks reunited to present their achievements and adventures from their time in Canada. Those in the 16-18 & Network Groups gained their Explorer Belt Award this evening, and those in the 14-16 Group have now completed parts of their Chief Scout's Award too! This adventure of a lifetime has been years in the making and it's strange to think that it's now all over. I wonder where we'll go next...?



Becoming a Young Leader has taught me many new things. I can plan and run activities and games effectively, have learnt better leadership skills and have found new ways to engage my group. The Young Leader Scheme has also helped me make friends with lots of new people.



Wintercamp 2020 at Hawkthirst will be forever known as Wettercamp! 26 hours of continuous rain certainly transforms a campsite into a whole different terrain. However on the way home, we briefly cross over the border into Scotland, to experience their beautiful sunny weather!



On Friday 13th March 2020 seven packs, around 140 Beavers from our District took part in the Deep Sleepover. (A fantastic 1st sleepover for me to join the District on.) We did arts and crafts, t-shirt painting, keyring making and a full tour of the Deep. Lots of fun and new experiences were had by all. Look out for next year dates to join in and I look forward to seeing you all there!



The 2020 Wolds Challenge was another fantastic event. The route was a little muddy places, but that made it even more fun! Our team really enjoyed the getting to the checkpoints where the Leaders were handing out sweets and having fun. It made it even more fun for us!



On the 29th of February the District Network organised their first event of the year, a night hike. We headed out to Great Given Dale home to Pocklington's District campsites. We arrived on the Saturday afternoon to set up camp and have a bit of a laugh and social catch up. After we had a fab time catching up, we embarked on our night hike setting off around 8pm and headed over to Millington for a stop off meal then returned back to the route, finishing back at camp at roughly 12am ready for a night's camp.

Scouts 

## Rounds

1. General Knowledge
2. Scouting
3. Science
4. Name that badge – During break
5. Film
6. A UK Scouting Road Trip
7. Music

There are 5 questions in each round, apart from Round 4.

Each question will be read out twice and displayed on screen.

The badges for Round 4 will be displayed for 15 minutes.

You will have 5 minutes after the end of each round to submit your answers.

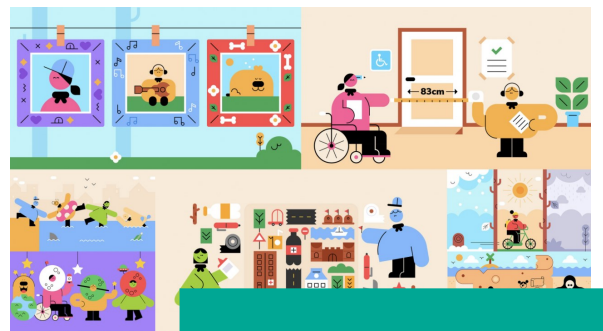
Jokers should be submitted before each round begins.

Scouts 

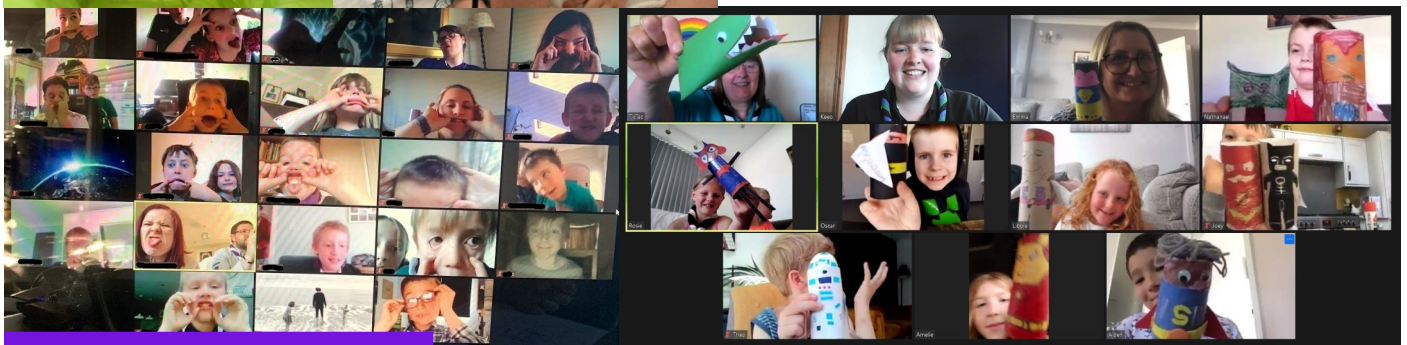


We held our first District Leaders Quiz back in November and have since held our subsequent ones online! They have been well attended with some great rivalry between Teams to win the coveted trophy!

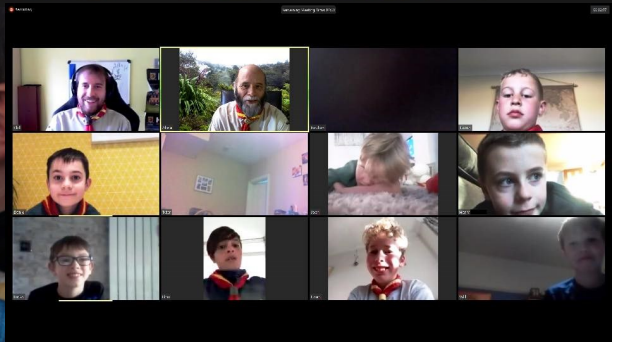
# Scouting at Home...



The Great Indoors



Virtual Scouting



St George's Day Promise Renewals



Cubs Assemble Online!

We are proud of all the young people and Network members that have achieved Top Awards this year and we look forward to welcoming you to a celebration evening in the future!



# District Constitution

## The District Scout Council

The District Scout Council is the electoral body, which supports Scouting in the District. It is the body to which the District Executive Committee is accountable.

## The District Executive Committee

The District Executive Committee exists to support the District Commissioner in meeting the responsibilities of the appointment and to provide support for Scout Groups, Explorer Scout Units and any District Scout Network in the District.

## The Structure of Blacktoft Beacon District Executive Committee

<b>Ex-Officio</b>	<b>Elected Members</b>
<ul style="list-style-type: none"><li>• The District Chairman</li><li>• The District Commissioner</li><li>• The District Secretary</li><li>• The District Treasurer</li><li>• The District Explorer Scout Commissioner</li><li>• The District Youth Commissioner</li><li>• The District Scout Network Commissioner</li></ul>	5 persons elected at the District Annual General Meeting
<b>Nominated Members</b>	<b>Co-opts</b>
<ul style="list-style-type: none"><li>• Persons nominated by the District Commissioner</li><li>• The nominations must be approved at the District Annual General Meeting</li><li>• Persons nominated need not be members of the District Scout Council and their number must not exceed that of the elected members.</li></ul>	<ul style="list-style-type: none"><li>• Persons co-opted annually by the District Executive Committee</li><li>• The number of co-opted members must not exceed the number of members who may be elected</li></ul>



## **A Quorum**

For a trustees' meeting there will be a minimum of one-third of the total number of charity trustees plus one.

## **Right of Attendance**

The County Commissioner and the County Chairman have the right of attendance at meetings of the District Executive Committee.

## **Sub-Committees**

The Committee will utilise sub-committees to deliver informed proposals to the Executive. The District Commissioner and the District Chairman will be ex-officio members of any sub-committee of the District Executive Committee.

Any sub-committee will have at least one member of the Executive committee within it. They will attend the District Executive for reporting purposes.

The sub-committees will exist as:

- Tablers Wood Management Committee
- District Appointment Advisory Group
- District Finance Sub Committee
- Adult Training Development Group
- District Explorer Scout Finance and Operations Group
- District Network Finance and Operations Group
- Any further as deemed necessary by the District Executive

## **Meeting Structures**

The District Scout Council will have a remit to hold an AGM once a year.

The District Executive Committee will have a remit to look at the business and operational matters of the District. The District Executive will meet a minimum of four times in a year.

The District Leaders meeting will have a remit to look at programme, activities, Sectional and Group support issues. It will be chaired by the DC. Those with right of attendance are District Scout Active Support Managers, District Scout Network Leader, the Explorer Scout Commissioner, all Assistant District Commissioners, District Scouters, District Chair, any other District appointees, Group Scout Leaders, Group contacts and Leaders who the Group Scout Leader or Group contact feel would add positive input to the meeting's agenda. The District Leaders meeting will meet a minimum of three times a year.

The District meeting will have a remit to feedback the outcomes from the Executive and District Leaders meeting to all Groups and Units within Blacktoft Beacon District. Those with right of attendance are the Scout Active Support members, Scout Network members, the Explorer Scout Leaders, GSLs, Group Managers, District Chair and any other District appointees. The District meeting will meet a minimum of once a year and this will usually take the form of an AGM.

# District Trustees

## Ex Officio:

Linda Thelwell (DC)  
Scott Millard (Chairman)  
Jayne Bell (Secretary)  
John Jobling (Treasurer)  
Shaun Wilson (DESC)  
Rory Kershaw (DYC)

## Co-opted Members:

Joy Milestone  
Josh Railton  
Frank Cook  
A Tablers Wood Committee  
Member: Chris Whiteley &  
Steve Howarth  
Amelia Bateman-Young  
(Network)

## Elected Members:

Jo Cook  
Pam Bell  
Barbara Simpson  
Wendy Macadam  
Freddy Preston

## Vice-Presidents:

Andy Eavis  
Christian Carver

## Nominated Members:

Lucy Carne  
Liz Fraswe  
Rachael Macadam  
Michelle Nobbs  
Neil Begbie

## Independent Examiner:

Alastair Connell  
262 Beverley Road  
Anlaby  
East Yorkshire  
HU10 7BG

## Bankers:

HSBC Bank PLC  
Hessle Merit House  
Hull

# **Blacktoft Beacon District Scout Council**

## **Financial Review**

for the year ended 31st March 2020

The accounts as follows are the final accounts of Blacktoft Beacon District Scouts for the year ended 31st March 2020. These accounts will be submitted to the auditor for due scrutiny as soon as face to face meetings are allowed.

The Annual General Meeting is asked to approve these accounts subject to audit. Once the accounts have been audited and signed off, they will be submitted to the District Executive Committee as a confirmation that the audit has been completed.

Charity Number: 114803

BLACKTOFT BEACON DISTRICT SCOUT COUNCIL

BALANCE SHEET AT 31ST MARCH 2020

	2020	2019
	£	£
<b>CURRENT ASSETS</b>		
Stock of Badges	2,711.58	2,560.55
Building Society Investment	136.00	136.00
Cash at bank and in hand	40,222.85	62,632.25
	<u>43,070.43</u>	<u>65,328.80</u>
<b>GENERAL PURPOSE ACCOUNT</b>		
Balance Brought Forward	15,942.68	15,108.71
Surplus (-deficit) for year	4,303.51	833.97
	<u>20,246.19</u>	<u>15,942.68</u>
<b>JAMBOREE FUND</b>		
Balance Brought Forward	29,377.32	4,980.08
Surplus (-deficit) for year	-26,266.19	24,397.24
	<u>3,111.13</u>	<u>29,377.32</u>
<b>SCOUT BADGE FUND</b>		
Balance Brought Forward	6,034.25	6,539.82
Surplus (-deficit) for year	325.35	-505.57
	<u>6,359.60</u>	<u>6,034.25</u>
<b>ACTIVE SUPPORT UNIT</b>		
Balance Brought Forward	391.29	280.91
Surplus (-deficit) for year	0.57	110.38
	<u>391.86</u>	<u>391.29</u>
<b>TABLERS WOOD</b>		
Balance Brought Forward	5,029.61	6,387.29
Surplus (-deficit) for year	-1,626.45	-1,357.68
	<u>3,403.16</u>	<u>5,029.61</u>
<b>ITS ACCOUNT</b>		
Balance Brought Forward	1,804.86	217.83
Surplus (-deficit) for year	-1,143.71	1,587.03
	<u>661.15</u>	<u>1,804.86</u>
<b>SKIDBY/DEVELOPMENT ACCOUNT</b>		
Balance Brought Forward	5,412.66	6,685.18
Surplus (-deficit) for year	445.29	-1,272.52
	<u>5,857.95</u>	<u>5,412.66</u>
<b>FELLS ACCOUNT</b>		
Balance Brought Forward	1,336.13	2,588.42
Surplus (-deficit) for year	1,703.26	-1,252.29
	<u>3,039.39</u>	<u>1,336.13</u>
	<u>43,070.43</u>	<u>65,328.80</u>

BLACKTOFT BEACON DISTRICT SCOUT COUNCIL

INCOME AND EXPENDITURE ACCOUNT FOR THE YEAR ENDED 31ST MARCH 2020

GENERAL PURPOSE ACCOUNT

INCOME	2020	2019
	£	£
District Levy	1,495.50	1,506.00
Building Society Dividend	28.69	33.57
Refund of Capitataion	1,004.00	1,027.00
District Branded Clothing	0.00	30.00
Bank interest	57.91	43.15
St Georges Day	2,689.00	2,545.00
Tablers Wood Insurance Settlement		1,486.89
Grant ERYC Tablers Wood		2,215.00
Start up Grant	500.00	
Explorer/Network Net Income	190.76	
Beaver/Cub/Scout Net Income	1,848.36	
Yorkshire Bank (St Georges Day)		500.00
	<u>7,814.22</u>	<u>9,386.61</u>
EXPENDITURE		
Mileage	75.00	98.00
Insurance	183.12	195.22
Postage	51.60	130.36
Stationery	86.14	838.49
AGM Expenses	669.06	334.09
St Georges Day Expenses	1,170.08	4,349.44
Friendship Challenge	0.00	50.00
Training	0.00	0.00
Hall Hire	200.00	100.00
Equipment	45.38	527.80
Video Licence	343.88	333.88
Tablers Wood Usage		504.00
Sundry Expenses	186.45	83.39
Start up Grant	500.00	
Cub/Beaver Section net cost		282.48
Scout/Explorer Section net cost		725.49
	<u>3,510.71</u>	<u>8,552.64</u>
SURPLUS (-DEFICIT) FOR YEAR	<u>4,303.51</u>	<u>833.97</u>

DISTRICT LEVY

Received from Groups	<u>40,378.50</u>	<u>39,156.00</u>
Remitted to County	37,636.75	36,646.00
Allocated to Jamboree Account	1,246.25	1,004.00
	<u>38,883.00</u>	<u>37,650.00</u>
District Levy for Year	<u>1,495.50</u>	<u>1,506.00</u>

JAMBOREE ACCOUNT

INCOME

District Levy 2019/2020	1,246.25	1,004.00
Other Income	815.49	0.34
Refund World Jamboree		224.73
Canada Jamboree	30,287.44	80,728.81
	<u>32,349.18</u>	<u>81,957.88</u>

EXPENDITURE

Donation World Jamboree		1,000.00
Donation Canada Trip	2,000.00	
Donation Euro Jam	750.00	
Canada Jamboree	55,865.37	56,560.64
	<u>58,615.37</u>	<u>57,560.64</u>

SURPLUS (-DEFICIT) FOR THE YEAR -26,266.19 24,397.24

BLACKTOFT BEACON BADGE ACCOUNT

Sale of Badges 3,063.29 3,623.53

Cost of Sales 2,671.94 3,995.98  
Gross Profit (-loss) 391.35 -372.45

Postage 66.00 95.02  
Stationery          38.10  
66.00 133.12

SURPLUS (-DEFICIT) FOR YEAR 325.35 -505.57

ACTIVE SUPPORT UNIT

Interest Received 0.57 0.38  
Donation          110.00  
0.57 110.38  
Expenses 0.00 0.00  
SURPLUS (-DEFICIT) FOR YEAR 0.57 110.38

TABLES WOOD

INCOME

Lettings	1,370.40	3,772.40
Grant (TKMAX)	800.00	

2,170.40   3,772.40

EXPENDITURE

Site Expenses

Sewerage		150.00
Water Rates	69.77	319.50
Electricity	749.13	715.23
Calor Gas	0.00	60.80
Site Insurance	419.22	413.02
Repairs Renewals	308.74	984.64
Repayment to Blacktoft Beacon for Insurance		1,486.89
Equipment (Fridge Freezer)	399.99	0.00
Gas Bottle Storage Cage	450.00	
Grass Cutting	1,400.00	1,000.00

TOTAL EXPENDITURE 3,796.85   5,130.08

SURPLUS (-DEFICIT) FOR YEAR -1,626.45   -1,357.68

SKIDBY ACCOUNT

INCOME

Closure of Group	1,032.29	
------------------	----------	--

1,032.29   0.00

EXPENDITURE

Room Hire		1,260.00
Badges		12.52
Development Support	587.00	

TOTAL EXPENDITURE 587.00   1,272.52

SURPLUS (-DEFICIT) FOR YEAR 445.29   -1,272.52

ITS ACCOUNT

INCOME

Donations	628.66	2,748.63
JOTI	319.21	125.00

947.87   2,873.63

EXPENDITURE

Sundry Expenses		39.92
Consumables	1,719.39	1,179.82
JOTI		20.70
Feather Flags	372.19	
Donation to St Georges Day		46.16

TOTAL EXPENDITURE 2,091.58   1,286.60

SURPLUS (-DEFICIT) FOR YEAR -1,143.71   1,587.03

FELLS ACCOUNT

INCOME

Fells	2,510.00	145.00
Wolds	1,740.00	1,447.00
	<u>4,250.00</u>	<u>1,592.00</u>

EXPENDITURE

Fells		
Centre Hire	300.00	800.00
Overnight Site	250.00	
Food	360.32	
Mini Bus	380.29	
Stationery	158.40	47.00
Other	83.84	
Portaloos		276.00
Donations	200.00	200.00
Badges	180.00	
	<u>1,912.85</u>	<u>1,323.00</u>

Wolds		
Hall Hire		300.00
Badges	282.00	327.00
Food	80.91	83.72
Transport	154.55	410.77
Donations		350.00
Stationery	116.43	49.80
	<u>633.89</u>	<u>1,521.29</u>

TOTAL EXPENDITURE

2,546.74    2,844.29

SURPLUS (-DEFICIT) FOR YEAR

1,703.26    -1,252.29



# Useful Contacts

Linda Thelwell - District Commissioner  
[dc@blacktoftbeacon-scouts.org.uk](mailto:dc@blacktoftbeacon-scouts.org.uk)

Rachael Macadam - Deputy District Commissioner  
[depdc@blacktoftbeacon-scouts.org.uk](mailto:depdc@blacktoftbeacon-scouts.org.uk)

Rory Kershaw - District Youth Commissioner  
[dyc@blacktoftbeacon-scouts.org.uk](mailto:dyc@blacktoftbeacon-scouts.org.uk)

Shaun Wilson - District Explorer Scout Commissioner  
[desc@blacktoftbeacon-scouts.org.uk](mailto:desc@blacktoftbeacon-scouts.org.uk)

Lucy Carne - District Explorer Scout Leader (Young Leaders)  
[descyl@blacktoftbeacon-scouts.org.uk](mailto:descyl@blacktoftbeacon-scouts.org.uk)

Wendy Macadam - Local Training Manager  
[ltm@blacktoftbeacon-scouts.org.uk](mailto:ltm@blacktoftbeacon-scouts.org.uk)

Jayne Bell - Tablers Wood Bookings Secretary  
[tablerswood@blacktoftbeacon-scouts.org.uk](mailto:tablerswood@blacktoftbeacon-scouts.org.uk)

Amelia Bateman-Young - District Network Administrator  
[dsnc@blacktoftbeacon-scouts.org.uk](mailto:dsnc@blacktoftbeacon-scouts.org.uk)

**[www.blacktoftbeacon-scouts.org.uk](http://www.blacktoftbeacon-scouts.org.uk)**

Information about District events, training courses, meetings and anything else you could think of, is put on our website and distributed via the newsletters. Please ensure you are signed up to receive them or you could be missing out on vital information!

Badges are also sold through the website at competitive prices, with all profits going to support Scouting in Blacktoft Beacon.



BLACKTOFT BEACON DISTRICT SCOUT COUNCIL

BALANCE SHEET AT 31ST MARCH 2020

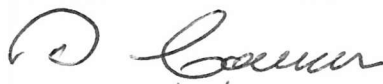
	2020	2019
	£	£
<b>CURRENT ASSETS</b>		
Stock of Badges	2,711.58	2,560.55
Building Society Investment	136.00	136.00
Cash at bank and in hand	40,222.85	62,632.25
	<u>43,070.43</u>	<u>65,328.80</u>
<b>GENERAL PURPOSE ACCOUNT</b>		
Balance Brought Forward	15,942.68	15,108.71
Surplus (-deficit) for year	4,303.51	833.97
	<u>20,246.19</u>	<u>15,942.68</u>
<b>JAMBOREE FUND</b>		
Balance Brought Forward	29,377.32	4,980.08
Surplus (-deficit) for year	-26,266.19	24,397.24
	<u>3,111.13</u>	<u>29,377.32</u>
<b>SCOUT BADGE FUND</b>		
Balance Brought Forward	6,034.25	6,539.82
Surplus (-deficit) for year	325.35	-505.57
	<u>6,359.60</u>	<u>6,034.25</u>
<b>ACTIVE SUPPORT UNIT</b>		
Balance Brought Forward	391.29	280.91
Surplus (-deficit) for year	0.57	110.38
	<u>391.86</u>	<u>391.29</u>
<b>TABLERS WOOD</b>		
Balance Brought Forward	5,029.61	6,387.29
Surplus (-deficit) for year	-1,626.45	-1,357.68
	<u>3,403.16</u>	<u>5,029.61</u>
<b>ITS ACCOUNT</b>		
Balance Brought Forward	1,804.86	217.83
Surplus (-deficit) for year	-1,143.71	1,587.03
	<u>661.15</u>	<u>1,804.86</u>
<b>SKIDBY/DEVELOPMENT ACCOUNT</b>		
Balance Brought Forward	5,412.66	6,685.18
Surplus (-deficit) for year	445.29	-1,272.52
	<u>5,857.95</u>	<u>5,412.66</u>
<b>FELLS ACCOUNT</b>		
Balance Brought Forward	1,336.13	2,588.42
Surplus (-deficit) for year	1,703.26	-1,252.29
	<u>3,039.39</u>	<u>1,336.13</u>
	<u>43,070.43</u>	<u>65,328.80</u>



Treasurer

District Commissioner

Report of the Auditor to the members of the Blacktoft Beacon District Scout Council.  
The above Balance Sheet and the attached Income and Expenditure Accounts have been prepared from the records and information supplied by the Blacktoft Beacon District Scout Council and are in accordance therewith.



27/8/2020

BLACKTOFT BEACON DISTRICT SCOUT COUNCIL

INCOME AND EXPENDITURE ACCOUNT FOR THE YEAR ENDED 31ST MARCH 2020

GENERAL PURPOSE ACCOUNT

INCOME	2020	2019
	£	£
District Levy	1,495.50	1,506.00
Building Society Dividend	28.69	33.57
Refund of Capitataion	1,004.00	1,027.00
District Branded Clothing	0.00	30.00
Bank interest	57.91	43.15
St Georges Day	2,689.00	2,545.00
Tablers Wood Insurance Settlement		1,486.89
Grant ERYC Tablers Wood		2,215.00
Start up Grant	500.00	
Explorer/Network Net Income	190.76	
Beaver/Cub/Scout Net Income	1,848.36	
Yorkshire Bank (St Georges Day)		500.00
	<u>7,814.22</u>	<u>9,386.61</u>
EXPENDITURE		
Mileage	75.00	98.00
Insurance	183.12	195.22
Postage	51.60	130.36
Stationery	86.14	838.49
AGM Expenses	669.06	334.09
St Georges Day Expenses	1,170.08	4,349.44
Friendship Challenge	0.00	50.00
Training	0.00	0.00
Hall Hire	200.00	100.00
Equipment	45.38	527.80
Video Licence	343.88	333.88
Tablers Wood Useage		504.00
Sundry Expenses	186.45	83.39
Start up Grant	500.00	
Cub/Beaver Section net cost		282.48
Scout/Explorer Section net cost		725.49
	<u>3,510.71</u>	<u>8,552.64</u>
SURPLUS (-DEFICIT) FOR YEAR	<u>4,303.51</u>	<u>833.97</u>

DISTRICT LEVY

Received from Groups	40,378.50	39,156.00
Remitted to County	37,636.75	36,646.00
Allocated to Jamboree Account	1,246.25	1,004.00
	<u>38,883.00</u>	<u>37,650.00</u>
District Levy for Year	1,495.50	1,506.00

JAMBOREE ACCOUNT

INCOME

District Levy 2019/2020	1,246.25	1,004.00
Other Income	815.49	0.34
Refund World Jamboree		224.73
Canada Jamboree	<u>30,287.44</u>	<u>80,728.81</u>
	<u>32,349.18</u>	<u>81,957.88</u>

EXPENDITURE

Donation World Jamboree		1,000.00
Donation Canada Trip	2,000.00	
Donation Euro Jam	750.00	
Canada Jamboree	<u>55,865.37</u>	<u>56,560.64</u>

SURPLUS (-DEFICIT) FOR THE YEAR

<u>58,615.37</u>	<u>57,560.64</u>
<u>-26,266.19</u>	<u>24,397.24</u>

BLACKTOFT BEACON BADGE ACCOUNT

Sale of Badges	3,063.29	3,623.53
Cost of Sales	<u>2,671.94</u>	<u>3,995.98</u>
Gross Profit (-loss)	391.35	-372.45
Postage	66.00	95.02
Stationery		38.10
	<u>66.00</u>	<u>133.12</u>
SURPLUS (-DEFICIT) FOR YEAR	<u>325.35</u>	<u>-505.57</u>

ACTIVE SUPPORT UNIT

Interest Received	0.57	0.38
Donation		110.00
	<u>0.57</u>	<u>110.38</u>
Expenses	0.00	0.00
SURPLUS (-DEFICIT) FOR YEAR	<u>0.57</u>	<u>110.38</u>

TABLERS WOOD

INCOME

Lettings	1,370.40	3,772.40
Grant (TKMAX)	800.00	
	<u>2,170.40</u>	<u>3,772.40</u>

EXPENDITURE

Site Expenses

Sewerage		150.00
Water Rates	69.77	319.50
Electricity	749.13	715.23
Calor Gas	0.00	60.80
Site Insurance	419.22	413.02
Repairs Renewals	308.74	984.64
Repayment to Blacktoft Beacon for Insurance		1,486.89
Equipment (Fridge Freezer)	399.99	0.00
Gas Bottle Storage Cage	450.00	
Grass Cutting	1,400.00	1,000.00
TOTAL EXPENDITURE	<u>3,796.85</u>	<u>5,130.08</u>

SURPLUS (-DEFICIT) FOR YEAR

-1,626.45 -1,357.68

ITS ACCOUNT

INCOME

Donations	628.66	2,748.63
JOTI	319.21	125.00
	<u>947.87</u>	<u>2,873.63</u>

EXPENDITURE

Sundry Expenses		39.92
Consumables	1,719.39	1,179.82
JOTI		20.70
Feather Flags	372.19	
Donation to St Georges Day		46.16
TOTAL EXPENDITURE	<u>2,091.58</u>	<u>1,286.60</u>

SURPLUS (-DEFICIT) FOR YEAR

-1,143.71 1,587.03

SKIDBY ACCOUNT

INCOME

Closure of Group	1,032.29	
	<u>1,032.29</u>	<u>0.00</u>

EXPENDITURE

Room Hire		1,260.00
Badges		12.52
Development Support	587.00	
TOTAL EXPENDITURE	<u>587.00</u>	<u>1,272.52</u>

SURPLUS (-DEFICIT) FOR YEAR

445.29 -1,272.52

FELLS ACCOUNT

INCOME

Fells	2,510.00	145.00
Wolds	1,740.00	1,447.00
	<u>4,250.00</u>	<u>1,592.00</u>

EXPENDITURE

Fells		
Centre Hire	300.00	800.00
Overnight Site	250.00	
Food	360.32	
Mini Bus	380.29	
Stationery	158.40	47.00
Other	83.84	
Portaloos		276.00
Donations	200.00	200.00
Badges	180.00	
	<u>1,912.85</u>	<u>1,323.00</u>
Wolds		
Hall Hire		300.00
Badges	282.00	327.00
Food	80.91	83.72
Transport	154.55	410.77
Donations		350.00
Stationery	116.43	49.80
	<u>633.89</u>	<u>1,521.29</u>

TOTAL EXPENDITURE

2,546.74 2,844.29

SURPLUS (-DEFICIT) FOR YEAR

1,703.26 -1,252.29

BLACKTOFT BEACON DISTRICT SCOUT COUNCIL

BALANCE SHEET AT 31ST MARCH 2020

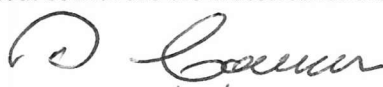
	2020	2019
	£	£
<b>CURRENT ASSETS</b>		
Stock of Badges	2,711.58	2,560.55
Building Society Investment	136.00	136.00
Cash at bank and in hand	40,222.85	62,632.25
	<u>43,070.43</u>	<u>65,328.80</u>
<b>GENERAL PURPOSE ACCOUNT</b>		
Balance Brought Forward	15,942.68	15,108.71
Surplus (-deficit) for year	4,303.51	833.97
	<u>20,246.19</u>	<u>15,942.68</u>
<b>JAMBOREE FUND</b>		
Balance Brought Forward	29,377.32	4,980.08
Surplus (-deficit) for year	-26,266.19	24,397.24
	<u>3,111.13</u>	<u>29,377.32</u>
<b>SCOUT BADGE FUND</b>		
Balance Brought Forward	6,034.25	6,539.82
Surplus (-deficit) for year	325.35	-505.57
	<u>6,359.60</u>	<u>6,034.25</u>
<b>ACTIVE SUPPORT UNIT</b>		
Balance Brought Forward	391.29	280.91
Surplus (-deficit) for year	0.57	110.38
	<u>391.86</u>	<u>391.29</u>
<b>TABLERS WOOD</b>		
Balance Brought Forward	5,029.61	6,387.29
Surplus (-deficit) for year	-1,626.45	-1,357.68
	<u>3,403.16</u>	<u>5,029.61</u>
<b>ITS ACCOUNT</b>		
Balance Brought Forward	1,804.86	217.83
Surplus (-deficit) for year	-1,143.71	1,587.03
	<u>661.15</u>	<u>1,804.86</u>
<b>SKIDBY/DEVELOPMENT ACCOUNT</b>		
Balance Brought Forward	5,412.66	6,685.18
Surplus (-deficit) for year	445.29	-1,272.52
	<u>5,857.95</u>	<u>5,412.66</u>
<b>FELLS ACCOUNT</b>		
Balance Brought Forward	1,336.13	2,588.42
Surplus (-deficit) for year	1,703.26	-1,252.29
	<u>3,039.39</u>	<u>1,336.13</u>
	<u>43,070.43</u>	<u>65,328.80</u>



Treasurer

District Commissioner

Report of the Auditor to the members of the Blacktoft Beacon District Scout Council.  
The above Balance Sheet and the attached Income and Expenditure Accounts have been prepared from the records and information supplied by the Blacktoft Beacon District Scout Council and are in accordance therewith.



27/8/2020



BLACKTOFT BEACON DISTRICT SCOUT COUNCIL

INCOME AND EXPENDITURE ACCOUNT FOR THE YEAR ENDED 31ST MARCH 2020

GENERAL PURPOSE ACCOUNT

INCOME	2020	2019
	£	£
District Levy	1,495.50	1,506.00
Building Society Dividend	28.69	33.57
Refund of Capitataion	1,004.00	1,027.00
District Branded Clothing	0.00	30.00
Bank interest	57.91	43.15
St Georges Day	2,689.00	2,545.00
Tablers Wood Insurance Settlement		1,486.89
Grant ERYC Tablers Wood		2,215.00
Start up Grant	500.00	
Explorer/Network Net Income	190.76	
Beaver/Cub/Scout Net Income	1,848.36	
Yorkshire Bank (St Georges Day)		500.00
	<u>7,814.22</u>	<u>9,386.61</u>
EXPENDITURE		
Mileage	75.00	98.00
Insurance	183.12	195.22
Postage	51.60	130.36
Stationery	86.14	838.49
AGM Expenses	669.06	334.09
St Georges Day Expenses	1,170.08	4,349.44
Friendship Challenge	0.00	50.00
Training	0.00	0.00
Hall Hire	200.00	100.00
Equipment	45.38	527.80
Video Licence	343.88	333.88
Tablers Wood Useage		504.00
Sundry Expenses	186.45	83.39
Start up Grant	500.00	
Cub/Beaver Section net cost		282.48
Scout/Explorer Section net cost		725.49
	<u>3,510.71</u>	<u>8,552.64</u>
SURPLUS (-DEFICIT) FOR YEAR	<u>4,303.51</u>	<u>833.97</u>

DISTRICT LEVY

Received from Groups	<u>40,378.50</u>	<u>39,156.00</u>
Remitted to County	37,636.75	36,646.00
Allocated to Jamboree Account	<u>1,246.25</u>	<u>1,004.00</u>
	<u>38,883.00</u>	<u>37,650.00</u>
District Levy for Year	<u>1,495.50</u>	<u>1,506.00</u>

JAMBOREE ACCOUNT

INCOME

District Levy 2019/2020	1,246.25	1,004.00
Other Income	815.49	0.34
Refund World Jamboree		224.73
Canada Jamboree	<u>30,287.44</u>	<u>80,728.81</u>
	<u>32,349.18</u>	<u>81,957.88</u>

EXPENDITURE

Donation World Jamboree		1,000.00
Donation Canada Trip	2,000.00	
Donation Euro Jam	750.00	
Canada Jamboree	<u>55,865.37</u>	<u>56,560.64</u>

	<u>58,615.37</u>	<u>57,560.64</u>
	<u>-26,266.19</u>	<u>24,397.24</u>

SURPLUS (-DEFICIT) FOR THE YEAR

BLACKTOFT BEACON BADGE ACCOUNT

Sale of Badges	<u>3,063.29</u>	<u>3,623.53</u>
Cost of Sales	<u>2,671.94</u>	<u>3,995.98</u>
Gross Profit (-loss)	<u>391.35</u>	<u>-372.45</u>
Postage	66.00	95.02
Stationery		38.10
	<u>66.00</u>	<u>133.12</u>
SURPLUS (-DEFICIT) FOR YEAR	<u>325.35</u>	<u>-505.57</u>

ACTIVE SUPPORT UNIT

Interest Received	0.57	0.38
Donation		110.00
	<u>0.57</u>	<u>110.38</u>
Expenses	<u>0.00</u>	<u>0.00</u>
SURPLUS (-DEFICIT) FOR YEAR	<u>0.57</u>	<u>110.38</u>

TABLERS WOOD

INCOME

Lettings	1,370.40	3,772.40
Grant (TKMAX)	800.00	
	<u>2,170.40</u>	<u>3,772.40</u>

EXPENDITURE

Site Expenses

Sewerage		150.00
Water Rates	69.77	319.50
Electricity	749.13	715.23
Calor Gas	0.00	60.80
Site Insurance	419.22	413.02
Repairs Renewals	308.74	984.64
Repayment to Blacktoft Beacon for Insurance		1,486.89
Equipment (Fridge Freezer)	399.99	0.00
Gas Bottle Storage Cage	450.00	
Grass Cutting	1,400.00	1,000.00

TOTAL EXPENDITURE	<u>3,796.85</u>	<u>5,130.08</u>
-------------------	-----------------	-----------------

SURPLUS (-DEFICIT) FOR YEAR	<u>-1,626.45</u>	<u>-1,357.68</u>
-----------------------------	------------------	------------------

ITS ACCOUNT

INCOME

Donations	628.66	2,748.63
JOTI	319.21	125.00
	<u>947.87</u>	<u>2,873.63</u>

EXPENDITURE

Sundry Expenses		39.92
Consumables	1,719.39	1,179.82
JOTI		20.70
Feather Flags	372.19	
Donation to St Georges Day		46.16

TOTAL EXPENDITURE	<u>2,091.58</u>	<u>1,286.60</u>
-------------------	-----------------	-----------------

SURPLUS (-DEFICIT) FOR YEAR	<u>-1,143.71</u>	<u>1,587.03</u>
-----------------------------	------------------	-----------------

SKIDBY ACCOUNT

INCOME

Closure of Group	1,032.29	
	<u>1,032.29</u>	<u>0.00</u>

EXPENDITURE

Room Hire		1,260.00
Badges		12.52
Development Support	587.00	

TOTAL EXPENDITURE	<u>587.00</u>	<u>1,272.52</u>
-------------------	---------------	-----------------

SURPLUS (-DEFICIT) FOR YEAR	<u>445.29</u>	<u>-1,272.52</u>
-----------------------------	---------------	------------------

FELLS ACCOUNT

INCOME

Fells	2,510.00	145.00
Wolds	1,740.00	1,447.00
	<u>4,250.00</u>	<u>1,592.00</u>

EXPENDITURE

Fells		
Centre Hire	300.00	800.00
Overnight Site	250.00	
Food	360.32	
Mini Bus	380.29	
Stationery	158.40	47.00
Other	83.84	
Portaloos		276.00
Donations	200.00	200.00
Badges	180.00	
	<u>1,912.85</u>	<u>1,323.00</u>
Wolds		
Hall Hire		300.00
Badges	282.00	327.00
Food	80.91	83.72
Transport	154.55	410.77
Donations		350.00
Stationery	116.43	49.80
	<u>633.89</u>	<u>1,521.29</u>

TOTAL EXPENDITURE

2,546.74 2,844.29

SURPLUS (-DEFICIT) FOR YEAR

1,703.26 -1,252.29